



MOTORSPORT SOUTH AFRICA

Association incorporated under section 21
Reg. No. 1995/05605/08

<http://www.motorsport.co.za>

First Floor, No. 9 Monza Close (Formerly 108), Kyalami Park, Midrand. P.O. Box 11499 Vorna Valley, 1686

e-mail circuit@motorsportsa.co.za

Telephone (011) 466-2440. Fax: (011) 086 610 4616 National Number: 0861 MSA MSA (0861 672 672)

MSA KARTING CIRCULAR 2/2009

152320/144

JUNIOR ROK CLASS

- A. In an attempt to better level the playing field in the Junior Rok class, an exhaust restrictor and amendments to the exhaust specifications have been introduced to take effect from Friday 27th February 2009 (see the attached drawings).

The basic elements of the change are as follows:

1. The original Junior Rok exhaust is retained.
2. The restrictor pipe is to be removed.
3. The hole in the side of the exhaust is to be welded closed (see drawing).
4. The header pipe must be checked to see that the length is as per the drawing.
5. If the header pipe is too long, it must be trimmed to the correct length behind the collar.
6. The restrictor must be welded into the exhaust manifold as per the drawing.

The exhaust restrictors are available from Terry Moss Racing (041 451 3936 or 082 891 8086) and each competitor is entitled to receive one free of charge.

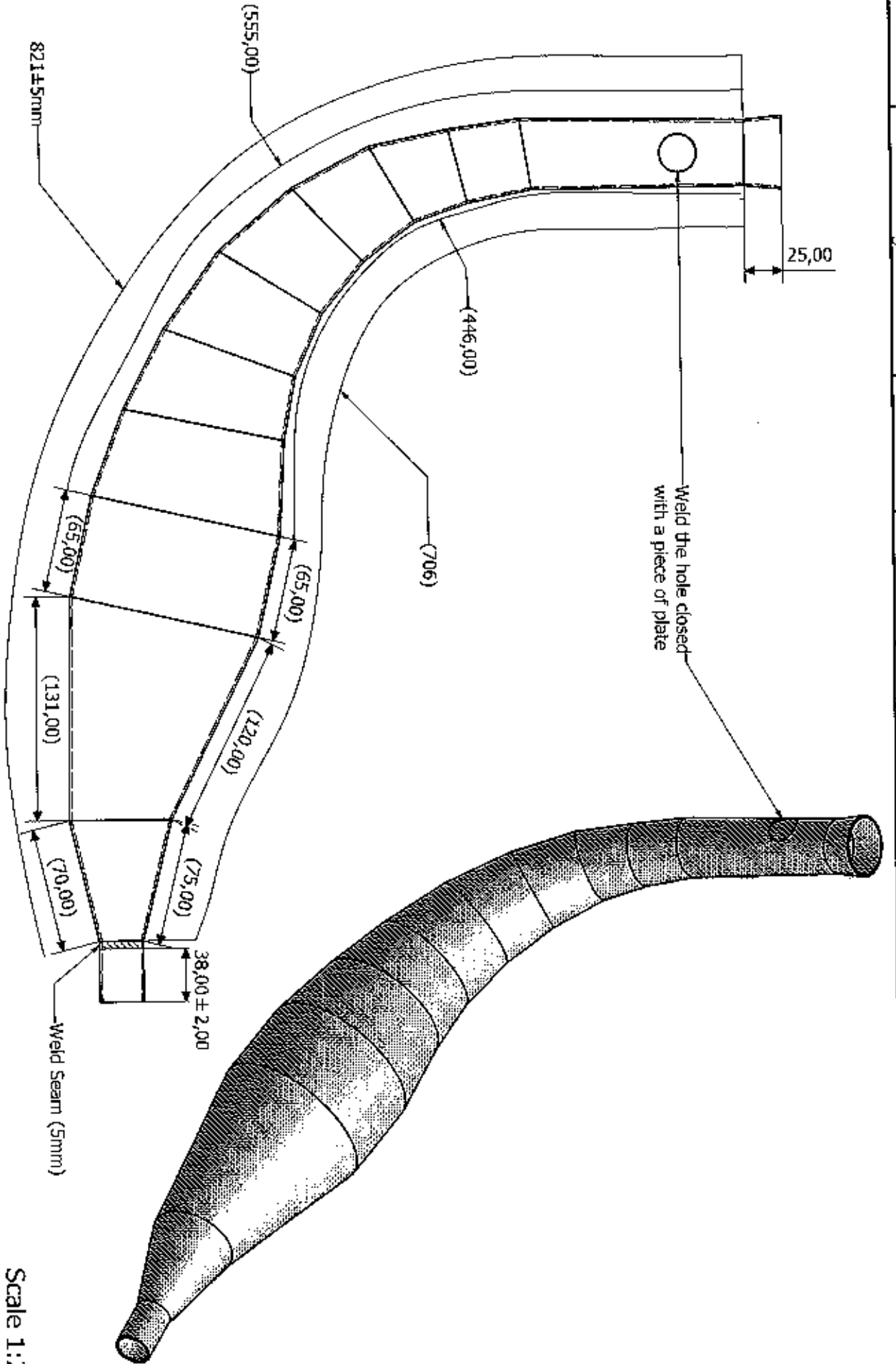
Testing has been undertaken in the above regard and the following are the **suggested** settings to be used:

- Ignition timing should be set to 2.5mm advance.
- Main jet at the coast should be 155 and inland should be 145.
- Gearing for the first national in PE: 12/84 – 12/85

Further testing is planned to take place at other circuits and competitors will be advised of any resultant suggested settings.

- B. The attached drawing of the stator flywheel is issued for clarification purposes.

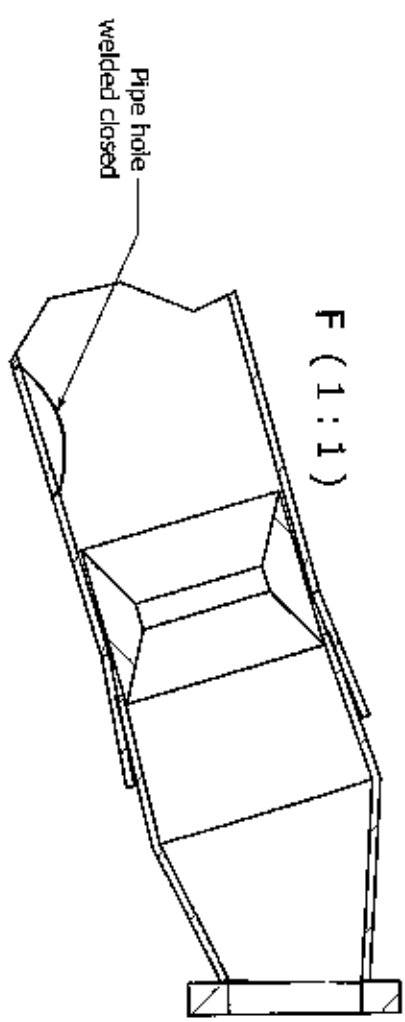
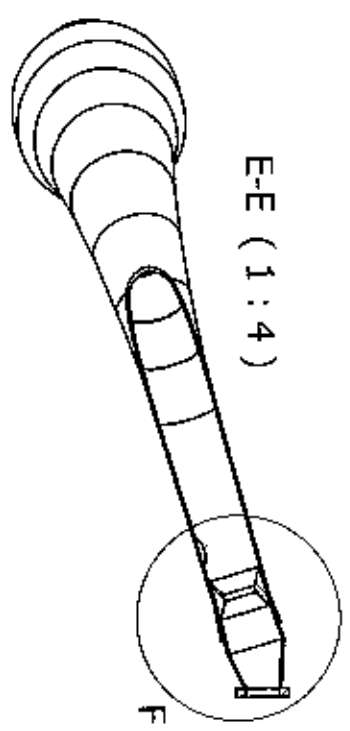
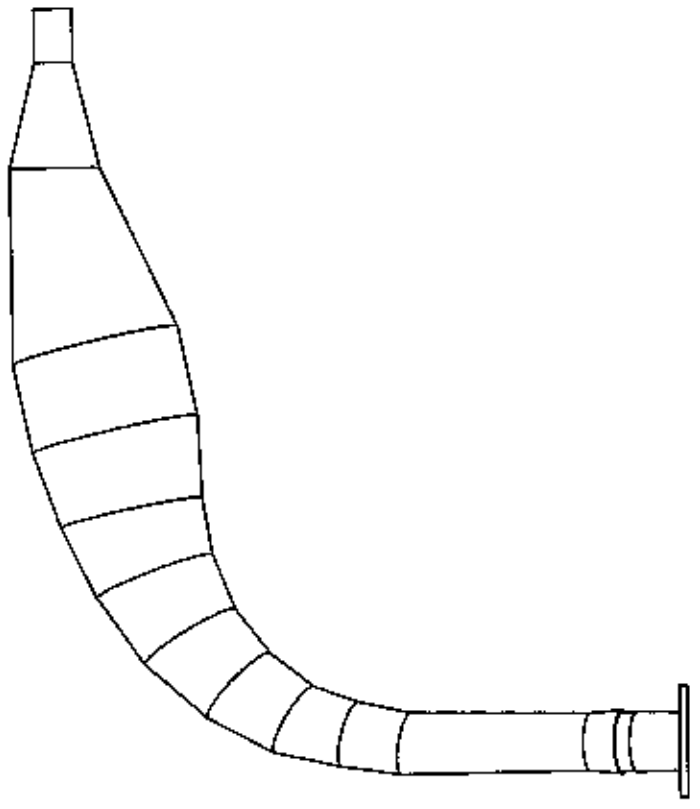
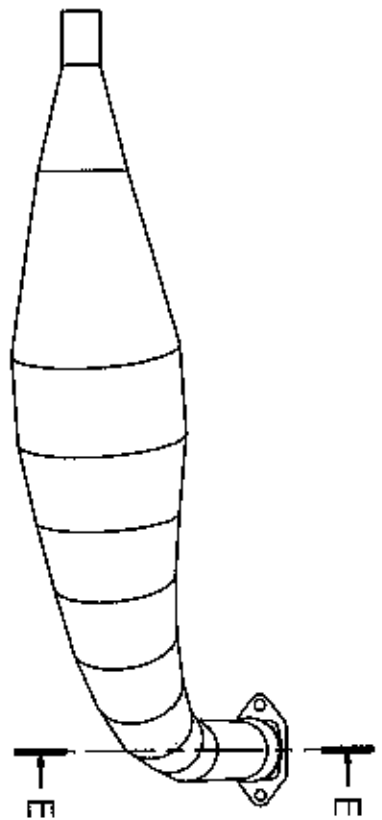
ADRIAN SCHOLTZ
MANAGER – SPORTING SERVICES



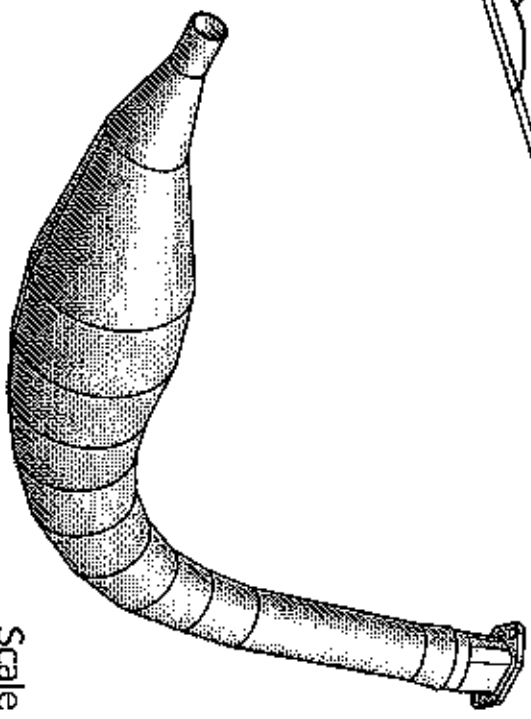
Scale 1:2.5

Designed by	Checked by	Approved by	Issue	Date
M. Stephen	T. Moss	T. Moss	2009/02/02	2009/02/02

JUNIOR ROK		Exhaust	
Exhaust 2009		Exhaust	Sheet
		01	1 / 1



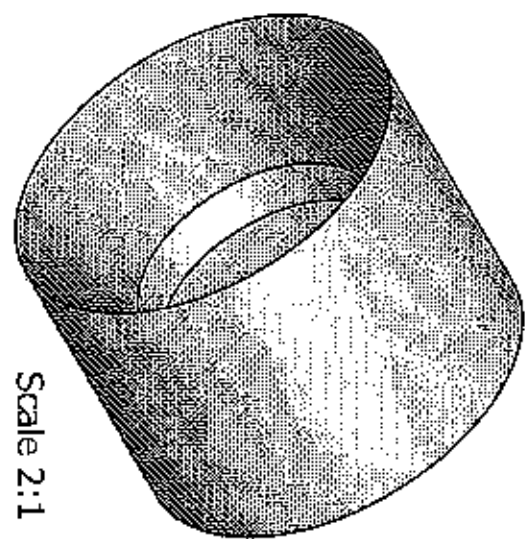
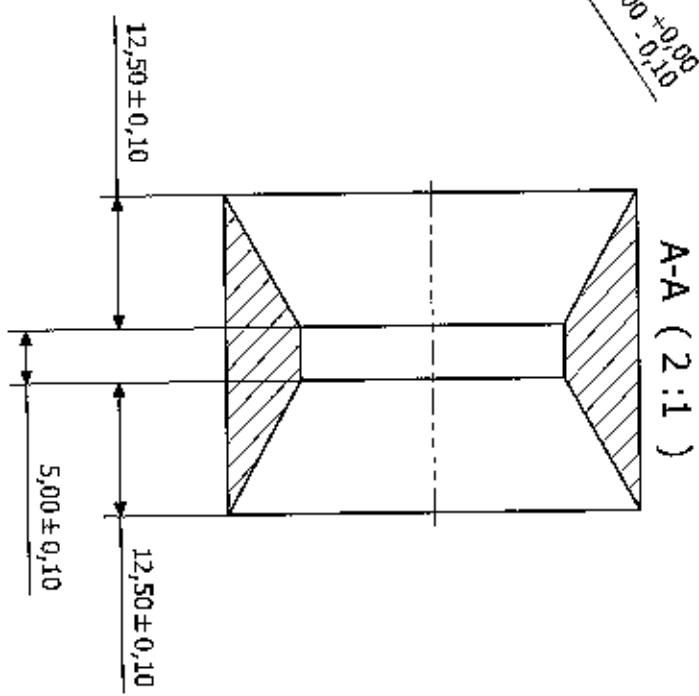
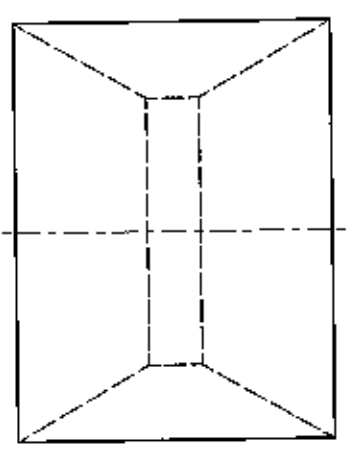
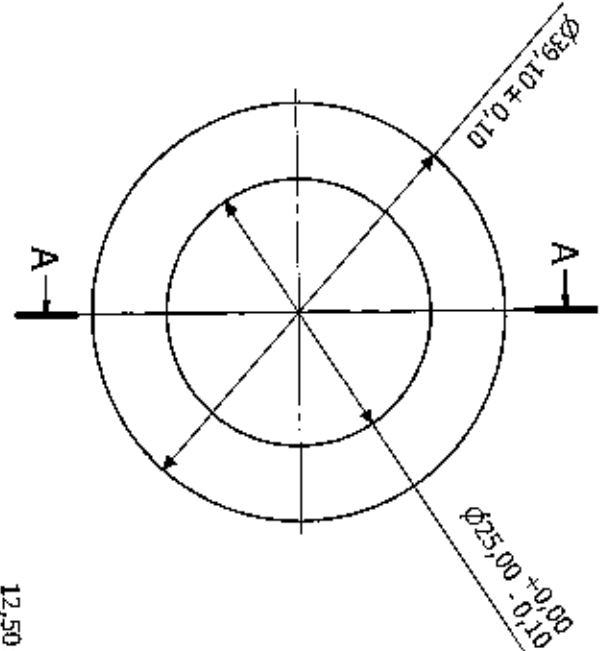
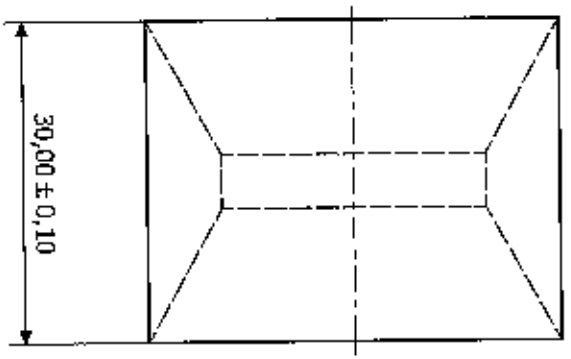
Pipe hole
welded closed



Scale 1:4

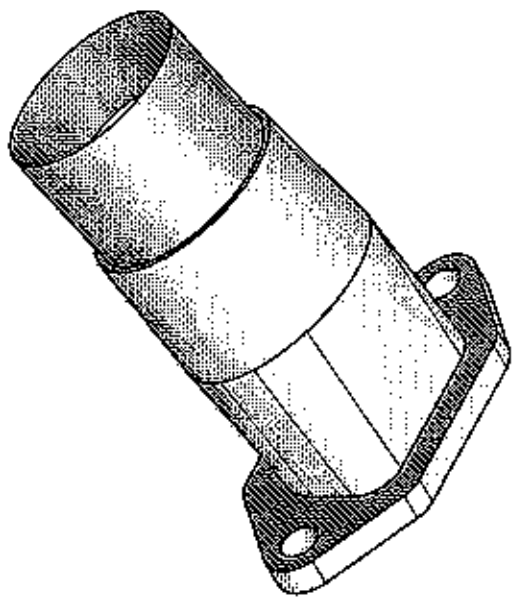
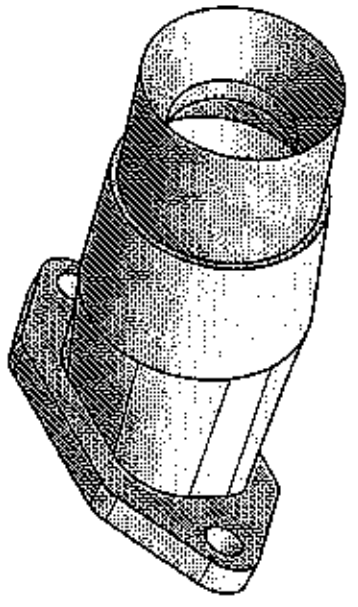
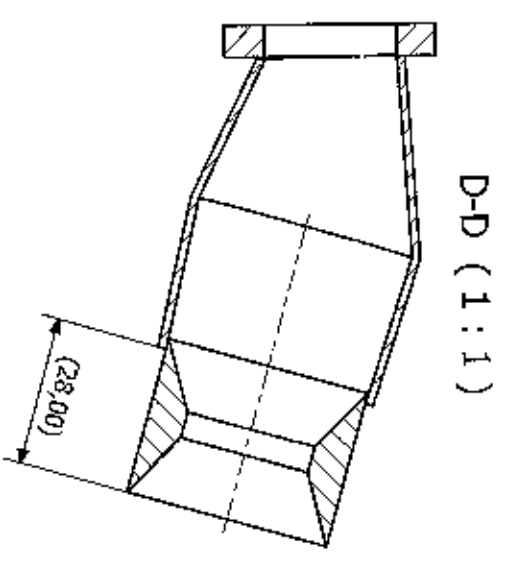
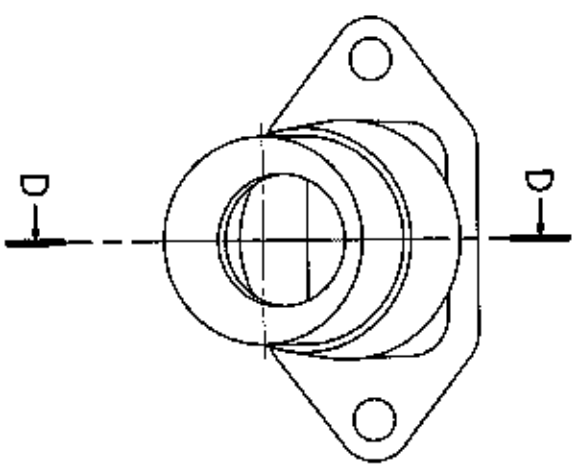
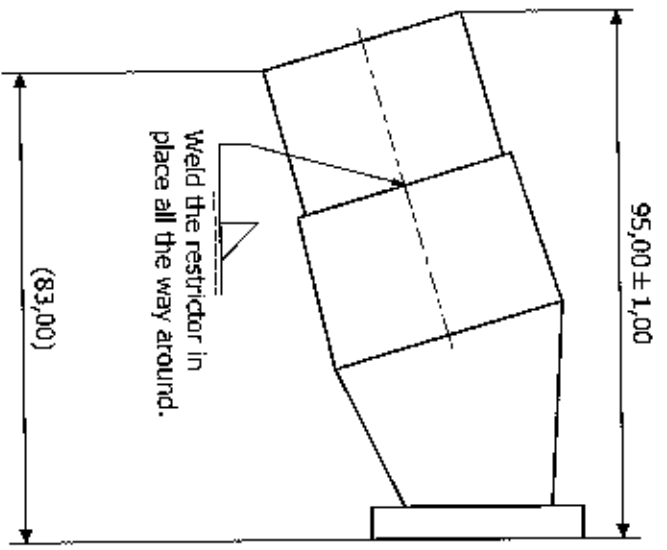
Designed by	Checked by	Approved by	Date	Date
M. Stephen	T. MOSS	T. Moss	2009/02/02	2009/02/02

JUNIOR ROK		Exhaust Assembly	
Exhaust Assy 2009		Revision	Sheet
		01	1 / 1



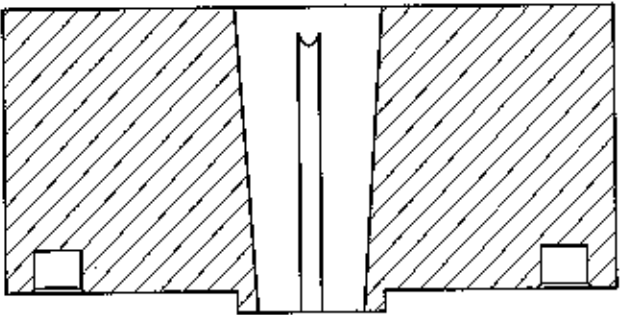
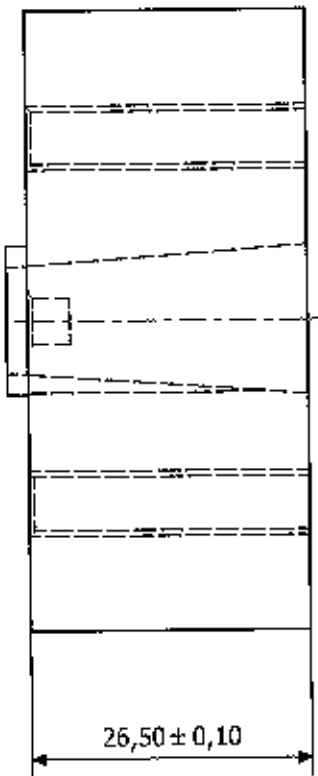
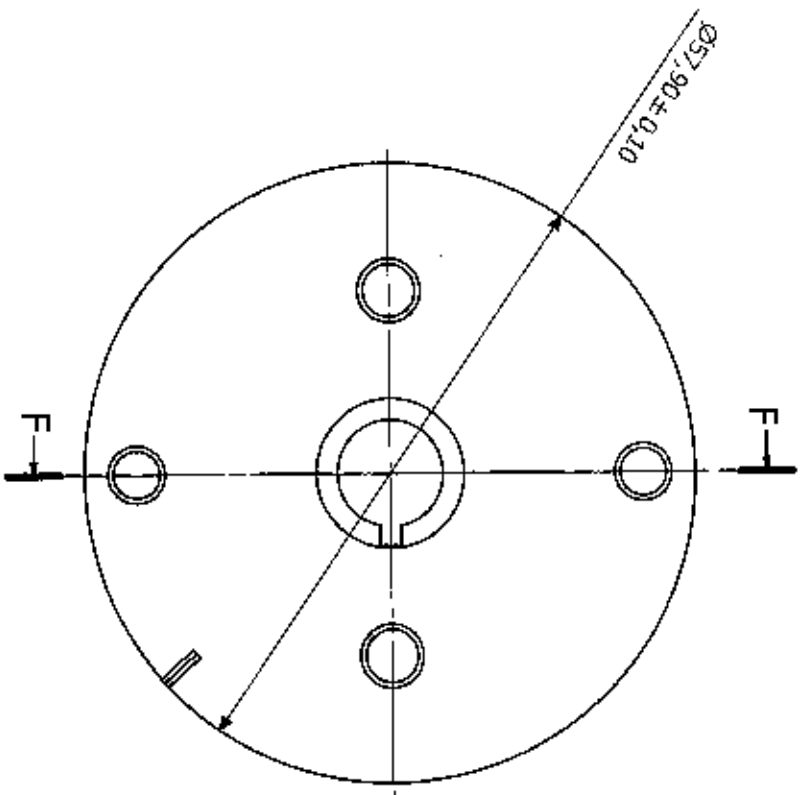
Scale 2:1

Designed by M. Steghem	Checked by T.MOSS	Approved by T.MOSS	Date 2009/02/02	Date 2009/02/02
JUNIOR ROK			Exhaust Manifold Restrictor	
Material - Mild Steel			Edition 01	Sheet 1 / 1

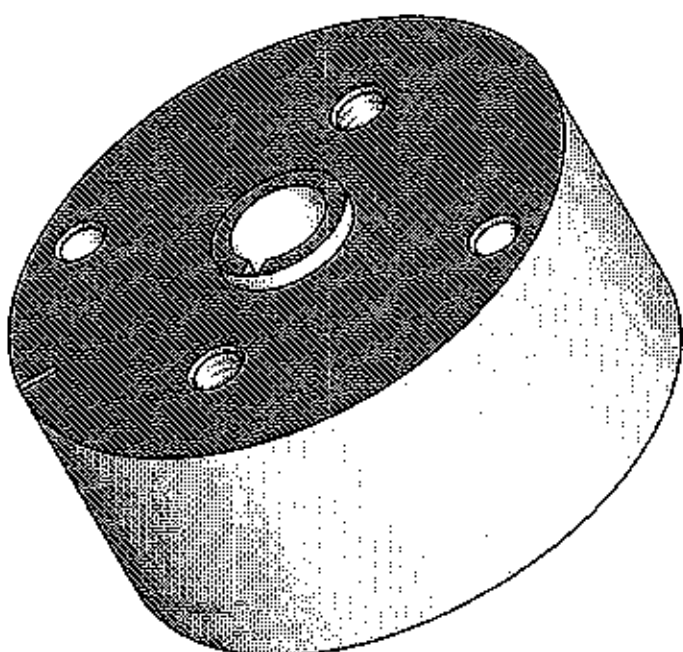


Scale 1:1

Designed by	Checked by	Approved by	Date	Date
M. Stephen	T. MOSS	T. MOSS	2009/02/02	2009/02/02
JUNIOR ROK				
Exhaust Manifold Restrictor Assembly			Edition	Sheet
Manifold-Restrictor Assy.			01	1 / 1



F-F (2:1)



Scale 2:1

Designed by M. Stephien	Checked by T.Moss	Approved by T.Moss	Date 2009/02/09	Date 2009/02/09	
JUNIOR ROK			PVL Stator Flywheel		
Stator Flywheel			Editer 01	Sheet 1 / 1	